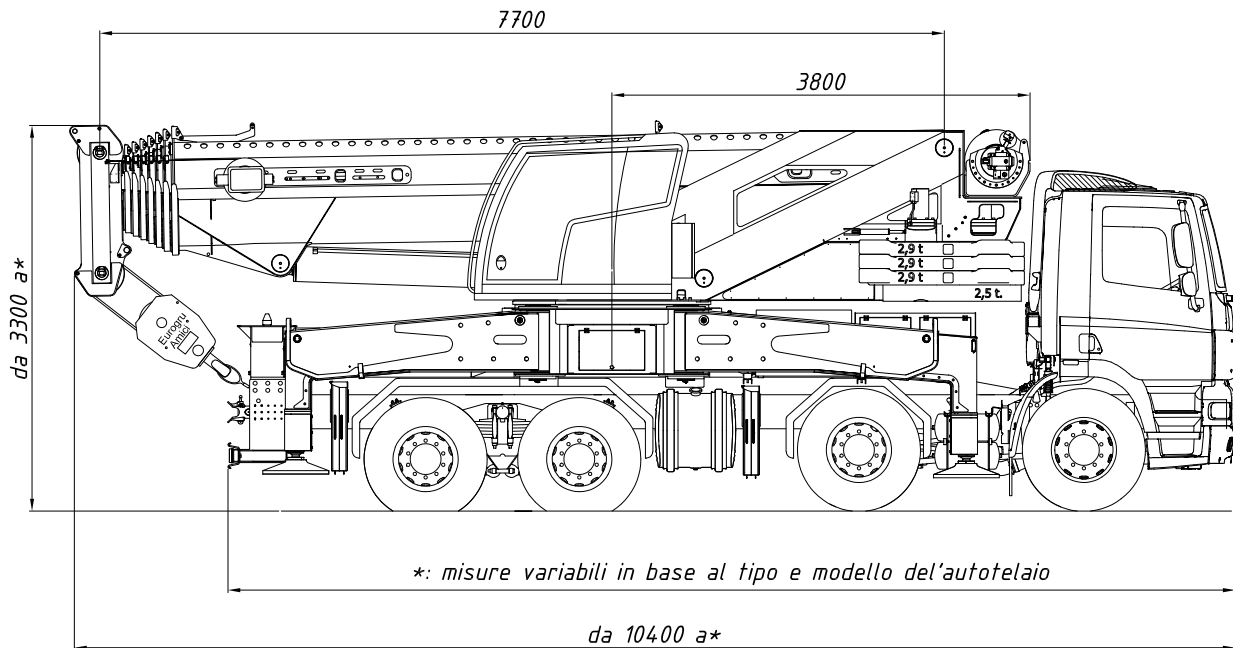
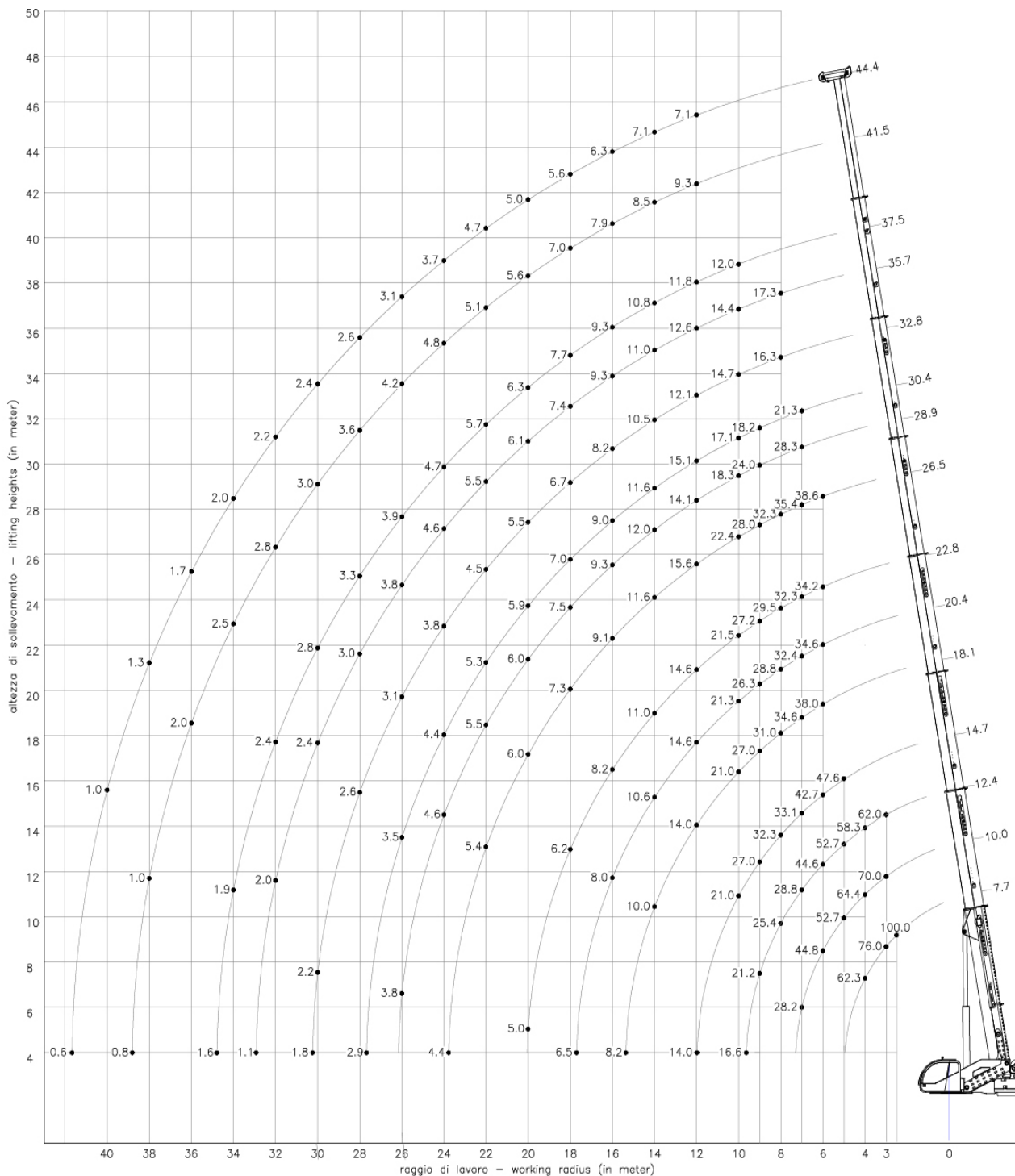


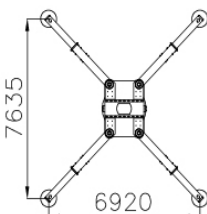
EuroGru Amici 100.46 t_h



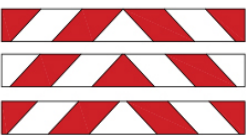
- Road Weight 32.000 Kg (without Counterweight)
- Can Be installed on truck 8 x 4 axel for exceptional towing
- Maximun Capacity 100 t
- Maximun Boom Height 47 m
- Wingham by 72 kN for a single line with variable displacement motor
- Counterweight 11.2 t modular and sectionable self installing at 100%
- Boom Telematic System , with double pin in neutral axel
- Drive and Steering in Upper Cabin and with Radio Remote Control
- LMI Load Limiter Indicator of last generation with video cameras
- Indicator pressure and load outriggers in crane cab
- Can be installed the remote control with display for LMI
- Choice of many optional

EuroGru Amici 100.46 t_h





11.200 kg



pr EN 13001-3
DIN 15018.1
DIN 15019.2
Portate in ton